



**MASONS**

Designed Smart, Built Tough.

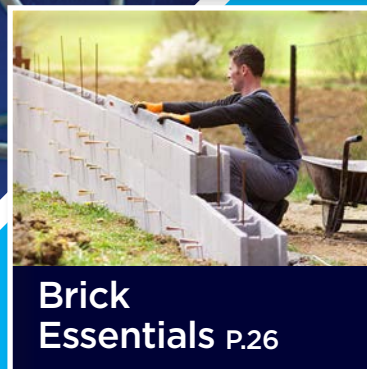
# BUILDING ESSENTIALS



**Weatherisation  
Products** P.2



**Concrete  
& Tanking** P.24



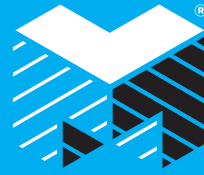
**Brick  
Essentials** P.26



**Vents and Access  
Panels** P.28

**TRADE ISSUE**

AUSTRALIA VOL 1



**MASONS**  
Designed Smart, Built Tough.

Established 20 years ago by Brisbane-born Trent Mason, Masons has now expanded into Australia.

Well-known for providing innovative, affordable and effective solutions to the New Zealand building industry, Masons are now offering a unique range of building products to Australia.

The Masons team are genuine building experts, who create long-term relationships and all Masons' products have third-party compliance and meet Australia's National Construction Code.

The Building Business independently reviews all of Masons' testing and literature to ensure each product complies with the Code and Compliance and Masons Building Products are fully resourced with technical support and detailing. Masons Flexible Air Barrier Systems are also supported with product training resources an online video library and where possible on-site training.

The Masons full product range can be found at: [masonsau.com.au](http://masonsau.com.au)



Trent Mason,  
Director



#### Legal Notes

The information, and, in particular, the recommendations relating to the application and use of Masons products are given in good faith based on Masons current knowledge and experience of the products when properly stored, handled and applied under normal conditions in accordance with Masons recommendations. In practice, the differences in materials, substrates and actual site conditions are such that no warranty in respect of merchantability or of fitness for a particular purpose, nor any liability arising out of any legal relationship whatsoever, can be inferred either from this information, or from any written recommendations, or from any other advice offered. The user of the product must test the product's suitability for the intended application and purpose. Masons reserves the right to change the properties of its products. The proprietary rights of third parties must be observed. All orders are accepted subject to our current terms of sale and delivery. Users must always refer to the most recent issue of the local Product Data Sheet for the product concerned. Copies are available on our website [masonsau.com.au](http://masonsau.com.au)

# Contents

## Weatherisation Products

<b>Barricade and Barricade Plus</b> Foil Wall Sarking .....	<b>2</b>
<b>Barricade FR</b> - Fire Retardant Building Wrap .....	<b>4</b>
<b>UNI Plus</b> - Flexible Air Barrier.....	<b>6</b>
<b>Maxi Plus Metal and Maxi Plus Metal and Tile</b> Foil Roof Sarking .....	<b>10</b>
<b>MAXI Plus</b> - Roof Underlay .....	<b>12</b>
<b>Barricade Weather Defense System</b> .....	<b>14</b>
<b>Barricade WD</b> - Weather Resistive Barrier.....	<b>16</b>
<b>Strapping</b> - House and Insulation Strapping .....	<b>17</b>
<b>40 Below Tapes</b> - Flashing Tape Family.....	<b>18</b>
<b>Penetration Seals</b> - For Pipe and Conduit Penetrations .....	<b>21</b>
<b>Foam Guard</b> .....	<b>22</b>
<b>Roof Boots</b> - EPDM and Silicon.....	<b>23</b>

## Concrete and Tanking Products

<b>Floor Guard</b> - Adhesive Membrane Protection.....	<b>24</b>
<b>Easy-Form and Sof-Form</b> - Adhesive Expansion Joint Filler.....	<b>25</b>

## Brick Essentials

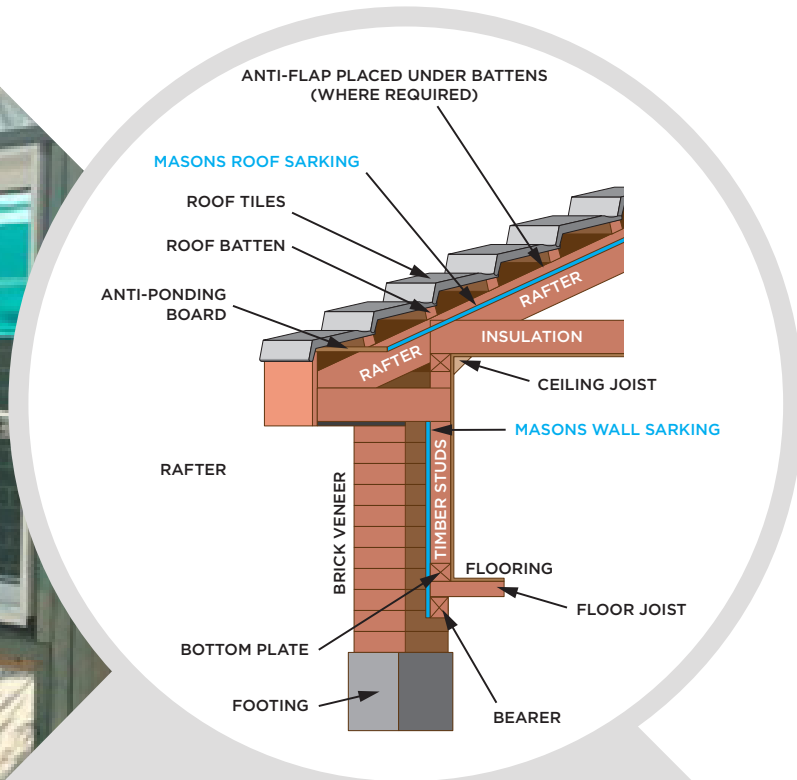
<b>Brick and Blocklock</b> - Masonry Reinforcing .....	<b>26</b>
<b>Extendable Letterbox Insert</b> .....	<b>27</b>
<b>Aluminium Weephole Vent</b> - For Plaster Systems .....	<b>27</b>
<b>Weephole Vent</b> - For Brick.....	<b>27</b>

## Vents and Access Panels

<b>Vents and Diffusers</b> .....	<b>28</b>
<b>Grilles</b> .....	<b>29</b>
<b>Cowl Wall Vents, Shutters and Flexible Ducting</b> .....	<b>30</b>
<b>Access Panels</b> .....	<b>31</b>

# Barricade & Barricade Plus

## FOIL WALL SARKING



### What is Wall Sarking?

Wall sarking is a flexible, pliable membrane which acts as a 'wall wrap' to help protect against the elements and provide temporary weather protection.

Masons Barricade Wall Sarking is a class 2 water and air barrier whereas the Barricade Plus Wall Sarking is a Class 2 vapour permeable air barrier, allowing the wall to 'breathe'.

Both Barricade and Barricade Plus Wall Sarking are tear resistant, strong, lightweight and easy to work with. Both are low flammability and able to be used in BAL zones 12,5 to FZ as per AS3959, section 3.10, except in exposed installations in fire control rooms or fire-isolated exits, in NCC 2019, Volume 1, specification C1.10.



**WATER AND AIR BARRIER**

Class 2



**LIGHTWEIGHT BUT STRONG**

Tear Resistant



**EASY TO WORK WITH**

Lightweight and Easy to Handle Roll Sizes



**VERSATILE**

For Residential and Commercial Builds

## Compliance with the NCC

- Barricade and Barricade Plus satisfies BCA specifications and requirements for reflective foil laminates.
- Complies with the specifications and requirements of AS/NZS 4200:1 for “Pliable building membranes” – a manual recognised by the BCA part 3.5 Roof and Cladding
- Thickness – less than 1mm
- Satisfies health and safety regulations
- Satisfies BCA Part 3.7.1 Fire Hazard Properties

Low Flammability Index in accordance with AS 1530.2 <5.

## Wall Installation

Up to R1.1 may be added to the wall system when Barricade or Barricade Plus Wall Sarking is installed as a pliable building membrane behind brick veneer / other claddings with a drained cavity.

Our manufacturing teams specialized process bonds together Aluminium Foil to a high strength reinforcing Polymer Mesh using a flame retardant adhesive. Barricade Plus wall sarking may be used as a substitute for non permeable vapour barrier wall wraps.

## Usage

### In all applications:

- External cladding should be installed A.S.A.P
- No contact is to be made with wet concrete on mortar
- Shrinkage of up to 2% can be expected
- Store in a dry area

### In reflective foil applications:

- Use only in accordance with AS/NZ 4200.2 for the ‘Installation Requirements for Pliable building membranes’.
- A minimum of 20mm air space is recommended adjacent to reflective foil face, to achieve maximum insulation values.

## Fire Performance

### Bushfire attack level

Barricade Plus Wall Sarking is suitable for BAL 12,5 to FZ as AS3959, section 1.10, except in exposed installations in fire control rooms or fire-isolated exits, in NCC 2019, Volume 1, specification C1.10

For all other data including Thermal Performance and the detailed properties of these two products please visit our website: [masonsau.com.au](http://masonsau.com.au).

Description	Masons Code	Roll size
Barricade Wall Sarking	AUBWS1.35x40.5	1.35m x 30m = 40m <sup>2</sup>
Barricade Wall Sarking	AUBWS1.35x81	1.35m x 60m = 81m <sup>2</sup>
Barricade Wall Sarking	AUBWS1.5x45	1.5m x 30m = 45m <sup>2</sup>
Barricade Wall Sarking	AUBWS1.5x90	1.5m x 60m = 90m <sup>2</sup>
Barricade Plus Wall Sarking	AUBPWS1.35x40.5	1.35m x 30m = 40m <sup>2</sup>
Barricade Plus Wall Sarking	AUBPWS1.35x81	1.35m x 60m = 81m <sup>2</sup>
Barricade Plus Wall Sarking	AUBPWS1.5x45	1.5m x 30m = 45m <sup>2</sup>
Barricade Plus Wall Sarking	AUBPWS1.5x90	1.5m x 60m = 90m <sup>2</sup>



Performs on timber and steel framed buildings.





# Barricade FR

## FIRE RETARDANT BUILDING WRAP

Barricade FR is a fire retardant building wrap suitable for all frame and cladding systems with or without a cavity. Also rated as a Class 4 vapour barrier.

### Perfectly Aligned with the New NCC Build Systems

Post recent NCC announcements, Barricade FR as a synthetic, breathable underlay will be part of the new NCC build systems in Australia.

### Quality Building Wrap

A non-woven fire retardant, water resistant, breathable synthetic wall underlay for use under direct fixed and non-direct fixed wall cladding on timber framed and steel framed buildings.

### Anti Fungal Properties

Barricade FR has unique anti fungal properties.

### Resists UV Exposure

Manufactured from high quality synthetic spun bonded material with high UV qualities to resist UV exposure for up to 60 days.



**ALIGNED WITH NCC  
BUILD SYSTEMS**



**FIRE RETARDANT**



**RESISTS UV EXPOSURE  
FOR UP TO 60 DAYS**

**FOR USE ON TIMBER  
OR STEEL FRAMING**

**CUSTOM BRANDING  
AVAILABLE**

## Applications

- Use where a fire retardant wrap is required. It performs well with all cladding systems and over timber or steel framing.
- Barricade FR is absorbent and can be used with absorbent and non-absorbent cladding.
- Suitable as a non rigid backing for stucco plaster.
- Suitable as an air barrier on walls that are not lined.
- Can be used on unlined gable ends.
- Vertical use only. Not suitable as a roof underlay.

## Fire Performance - Flammability Index Low ( $\leq 5$ )

Tested in accordance with AS1530.2-1993 - Methods for fire tests on building materials, components, and structures Part 2: Test for flammability of materials.

## Bushfire Attack Levels

Complies with AS3959-2018, construction of buildings in bushfire-prone areas. Seek independent advice regarding the selection of sarking prior to installation in the BAL design.

Description	Masons Code	Roll size
Barricade FR Building Wrap 1.37m x 35m <sup>2</sup>	BFRMPB1.37x35	1.37m x 25.45m = 35m <sup>2</sup>
Barricade FR Building Wrap 1.37m x 40m <sup>2</sup>	BFRMPB1.37x40	1.37m x 29.19m = 40m <sup>2</sup>
Barricade FR Building Wrap 1.37m x 45m <sup>2</sup>	BFRMPB1.37x45	1.37m x 30m = 45m <sup>2</sup>
Barricade FR Building Wrap 1.37m x 50m <sup>2</sup>	BFRMPB1.37x50	1.37m x 36.5m = 50m <sup>2</sup>
Barricade FR Building Wrap 1.37m x 80m <sup>2</sup>	BFRMPB1.37x80	1.37m x 58.38m = 80m <sup>2</sup>
Barricade FR Building Wrap 1.37m x 100m <sup>2</sup>	BFRMPB1.37x100	1.37m x 73m = 100m <sup>2</sup>
Barricade FR Building Wrap 1.5m x 45m <sup>2</sup>	BFRMPB1.5x45	1.5m x 30m = 45m <sup>2</sup>
Barricade FR Building Wrap 1.5m x 80m <sup>2</sup>	BFRMPB1.5x80	1.5m x 53.3mm = 80m <sup>2</sup>
Barricade FR Building Wrap 2.74m x 80m <sup>2</sup>	BFRMPB2.74x80	2.74m x 29.19m = 80m <sup>2</sup>
Barricade FR Building Wrap 2.74m x 100m <sup>2</sup>	BFRMPB2.74x100	2.74m x 36.5m = 100m <sup>2</sup>

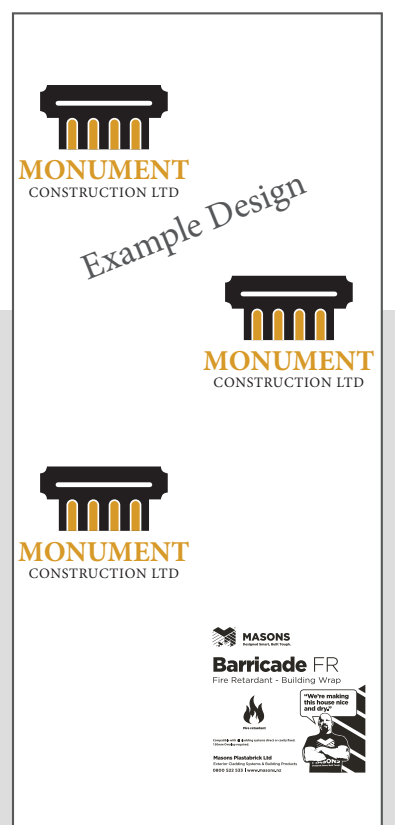
## Custom Branded Wrap

Barricade FR is available to be custom branded with your company logo. A perfect way to get brand exposure.

Custom Branded BFR is available by the pallet. Please talk to your Masons Account Manager for more information, including number of rolls to a pallet and minimum order quantities.

- Maximum number of colours: 2
- Lead time: 3-16 weeks.

Available in a variety of roll sizes, including small 1.37m x 29.9m rolls for ease of installation.



1.274 m

Keep construction moving with

# UNI<sup>®</sup> PLUS

## FLEXIBLE AIR BARRIER

Keep the elements out, so your building project can continue despite bad weather or material delays.



UV PROTECTION

Time overruns are one of the biggest contributors to increased project costs.

By installing UNI Plus Flexible Air Barrier, you get up to 90 days of rain and UV protection for unclad framing. Building teams can continue working inside, even if the cladding is delayed.

Once installed, this heavy-duty Flexible Air Barrier is an excellent second line of defence – it is vapour permeable, allowing moisture vapour to pass out of the building envelope for the life of the building.



### STAY ON TRACK WITH YOUR BUILD

If Cladding is Delayed

UPTO  
**90**  
DAYS

### WEATHER & UV PROTECTION

And UV Protection.  
Ideal for Reverse Builds



### QUICK AND EASY TO INSTALL

Full Support with Videos and Training



### A SECONDARY LINE OF DEFENSE

Against Moisture

## A Stronger Structure brings Multiple Benefits

UNI Plus Flexible Air Barrier is a fire retardant nonwoven synthetic wall underlay. Thicker and stronger than conventional building wrap materials, UNI's multiple-ply structure is a barrier to both air and water, while still allowing water vapour to diffuse.

Once fitted, UNI Plus's sandwich construction – two outer layers of non-woven polypropylene with a middle layer of a functional-technical film – resists UV degradation for up to 90 days and is also fire retardant. It is installed at a fraction of the cost of rigid air barriers, such as plywood or cement board.

## A Superior Building Wrap

UNI Plus is a quality wall underlay once the structure is clad – with superior moisture protection compared to standard building wraps. The outer layer keeps out water, while the technical film allows water vapour to pass through and escape. This means UNI Plus diffuses moisture out of the building more efficiently than ordinary building wraps, creating a drier, more comfortable environment inside and a more effective cladding system.

## Easy Installation

Masons is committed to supporting builders with their first time use of UNI Plus Flexible Air Barrier. The following resources are available:

- Training videos in English and optional Chinese subtitles
- Detailed printable Installation instructions in either English or Chinese
- Pre-inspection checklists
- On-site training (when appropriate)



## Applications

- Suitable for commercial and residential construction, timber or steel framing, and can be used with all cladding systems.
- Strong and durable. (See the UNI Plus installation instructions and video on our website).
- Suitable as a non rigid backing for stucco plaster.
- Suitable as an air barrier on walls that are not lined including gable ends.
- UNI Plus is fire retardant for flexible wall underlays.

**PASS** (Product Assurance Supplier Statement). For PASS documentation please visit the UNI Plus Flexible Air Barrier product page at: [masonsau.com.au](http://masonsau.com.au)



For documentation, visit: [masonsau.com.au](http://masonsau.com.au)

For installation videos check out our **Masons Plastabrick YouTube Channel**



Performs on timber and steel framed buildings.



**MASONS**  
Designed Smart, Built Tough.

# UNI<sup>®</sup> PLUS

## FLEXIBLE AIR BARRIER

- **Weatherproofing and Condensation Control**

Meets the requirements of the NCC 2019 Volume 1 parts F1.6, F6.2(a) (i) and (iii), Volume 2 parts 3.5.2.4(b), 3.8.7.2(a)(i) and (iii), and all State-prescribed variations, through compliance with AS/NZS 4200.1.

- **Non-Combustible Sarking-Type Material Exemption**

This product may be used in accordance with the non-combustible sarking-type material exemption stated in NCC 2019 Volume 1 Section C1.9(e)(vi) and Volume 2 Section 3.7.1.1(f) – it does not exceed 1mm in thickness and has a Flammability Index  $\leq 5$ .

### Fire Performance - Flammability Index Low ( $\leq 5$ )

Tested in accordance with AS1530.2-1993 – Methods for fire tests on building materials, components, and structures Part 2: Test for flammability of materials.

### Bushfire Attack Levels

Complies with AS3959-2018 Construction of buildings in bushfire-prone areas. Seek independent advice regarding the selection of sarking prior to installation in the BAL design.



# UNI Plus Installation Accessories

## CN100B UNI Cap Nailer Gun

### Best Practice to Fix UNI to the Frame

This gun shoots plastic caps with a 25mm ring shanked nail, and increases the holding power of the wrap.

Nails available separately as galvanised or stainless steel. A 90-100 PSI Air Compressor is also required.



## Stinger Gun Nail Washer Pack

### For use with Stinger Gun

Pack of 2,000.

Available as Galvanised or Stainless Steel nail and washers.



## 40 Below Flex

### Flashing Tape

Our most advanced, high performance flashing tape. Cutting edge adhesive. Ultra-thin and pliable. Nail and screw sealable with just one layer.



## Plastic Scraper

### For use with 40 Below Flex and Penetration Seals

Press firmly onto the tape for best adhesion. Available free from your Masons Rep.



## UNI Fasteners

### For Timber Frames

For use with a hammer. Available as a 32mm galvanised or stainless steel nail.



## UNI Fasteners

### For Steel Frames

For use with an appropriate driver. 32mm galvanised screw with washer pack.



## Penetration Seals

### For Pipe Penetrations

Air seal flashings designed for cavity construction where pipes or wires penetrate the air barrier. Available in 2 sizes. Cut to size to fit any pipe between 1mm and 170mm diameter.



Description	Masons Code
UNI Plus 2.74m x 18.25m = 50m <sup>2</sup>	UNIPLUS2.74X50
UNI Fasteners Galv Nail and Washer 32mm QTY 2500 (for use with hammer)	UNIFASTGN
UNI Fasteners Stainless Steel Nail & Washer 32mm QTY 2500 (for use with hammer)	UNIFASTSS2500
UNI Fasteners. Bucket of collated screws for Stainless Steel frames. QTY 1500	UNIFASTSTLFRAME
UNI Cap Nailer Gun	UNICAPNAILER
UNI Nail Washer Pack for UNI Gun QTY 2,000 Galv for use with Gun	UNINAILPACK
UNI Nail Washer Pack for UNI Gun. Stainless Steel 2,000 for use with gun	UNINAILPACKSS
40 Below Flex Flashing Tape	40BELOWFLX75x20
Penetration Seal - 1-75mm Pack of 10	PSEAL75
Penetration Seal - 80-170mm Pack of 10	PSEAL170





**MASONS**  
Designed Smart, Built Tough.



# MAXI PLUS

## FOIL ROOF SARKING

Available as two choices: Maxi Plus Metal Roof Sarking and Maxi Plus Tile and Metal Roof Sarking.



**REFLECTS  
RADIANT HEAT**



**FIRE  
RESISTANT**



**LIGHTWEIGHT  
AND STRONG**



**WATER BARRIER &  
SECOND LINE OF  
DEFENCE**

### What is Roof Sarking?

Roof sarking is a strong and pliable laminated membrane that sits under tile and metal roofs, protecting against moisture, drafts and dust. Sarking comprises a reflective foil layer on one side that protects against radiant heat, by reflecting heat from the sun's rays away from your roof.

Masons Maxi Plus Roof Sarking is a heavy duty, strong, and tear resistant sarking providing a water barrier and second line of defence under tile and metal roofs. It is fire resistant, and able to be used in BAL zones as per the technical data sheet downloadable on our website: [masonau.com.au](http://masonau.com.au)

### Compliance with the NCC

- Maxi Plus Tile and Metal Roof Sarking and Maxi Plus Metal Roof Sarking satisfy BCA specifications and requirements for reflective foil laminates.
- Complies with the specifications and requirements of AS/NZS 4200:1-2017 for 'pliable building membranes' which is a manual recognised by the BCA part 3.5 Roof and Cladding.
- Thickness - less than 1mm.
- Satisfies Health and Safety regulations and BCA Part 3.7.1 Fire Hazard properties.
- Low Flammability Index in accordance with AS 1530.2 <5.

## Roof Installation

Up to R1.3 may be added to the insulation system when Maxi Plus Roof Sarking is installed. During Manufacture the specialized process bonds together Aluminium Foil to a high strength reinforcing Polymer Mesh using a flame retardant adhesive. Maxi Plus Roof Sarking is purposely treated blue to reduce the reflective glare problems during installation.

## Usage

### In all applications:

- External cladding should be installed A.S.A.P
- No contact is to be made with wet concrete on mortar
- Shrinkage of up to 2% can be expected
- Store in a dry area

### In reflective foil applications:

- Use only in accordance with AS/NZ 4200.2 for the 'installation requirements for pliable building membranes'.
- Minimum of 20mm air space is recommended adjacent to reflective foil face to achieve maximum insulation values.
- 40mm sag between trusses is recommended when using Maxi Plus Metal Roof Sarking.
- For use in enclosed structures.

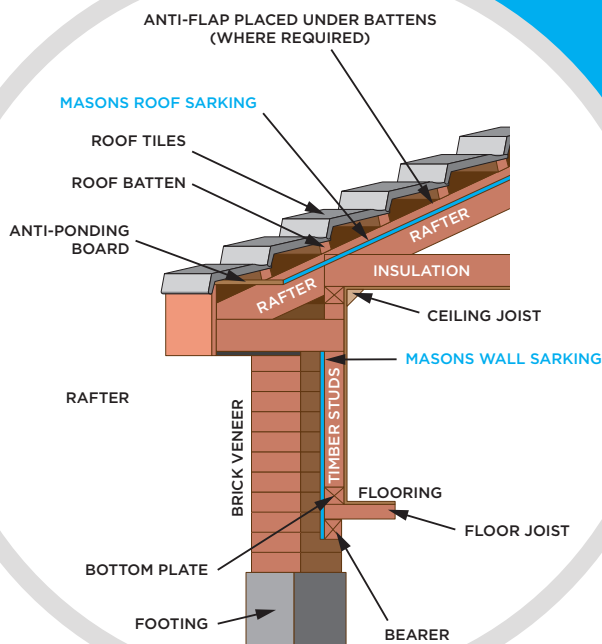
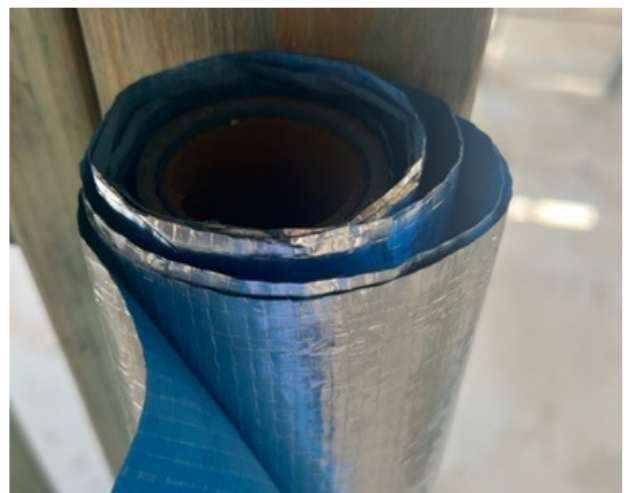
**Note:** Use in cold temperature climates (daytime less than 5°C). Requires roof to be well ventilated, and moist air from within the dwelling to be exhausted out into the atmosphere.

## Fire Performance

### Bushfire attack level

Maxi Plus Roof Sarking is suitable for BAL 12,5 to FZ as per AS3959, section 3.10, except in exposed installations in fire control rooms or fire-isolated exits, in NCC 2019 Volume 1 specification C1.10.

For all other data including 'thermal performance' and the detailed properties of these two products please visit our website: [masonsau.com.au](http://masonsau.com.au).



Description	Roll size	Masons Code
Maxi Plus Metal Roof Sarking	1.35m x 30m = 40m <sup>2</sup>	AUMPMRS1.35x40.5
Maxi Plus Metal Roof Sarking	1.35m x 60m = 81m <sup>2</sup>	AUMPMRS1.35x81
Maxi Plus Tile and Metal Roof Sarking	1.5m x 30m = 45m <sup>2</sup>	AUMPMTRS1.5x45



**MASONS**  
Designed Smart, Built Tough.



# MAXI PLUS

## ROOF UNDERLAY

Masons MAXI PLUS roof underlay is a fire retardant, flexible sarking that assists in the control of moisture. It can also be used as a wall membrane.



**SELF SUPPORTING**



**FIRE  
RETARDANT**



**VERY THICK,  
STRONG AND TEAR  
RESISTANT**



**VERY HIGH  
VAPOUR  
PERMEABILITY**

## Why Choose MAXI PLUS?

### Premium Performance Yet Affordable

Made from 3 layers: a very high vapour permeable water resistant membrane sandwiched between two tough layers of non-woven polyolefin fabric. Helps control condensation inside, while channelling water away to the exterior.

### Fire Protection Built In

MAXI PLUS roof underlay serves to protect buildings and their occupants not just from moisture but also from fire risks.

It is fire retardant and performs well in rigorous testing to pass AS1530 part 2 FI <5.

### Assists in Moisture Control

Deflects water and air during construction and as part of the finished roof designs moisture management system.

### Self Supporting and Strong

It is a premium grade roof underlay that won't rip or tear during normal handling, making installation quick, easy and efficient.

### Highly Breathable

A premium roof underlay for its weight. Has the ability to transfer water vapour at higher rates than traditional sarking. This is helpful in the control of condensation.

MAXI PLUS roof underlay is categorised in accordance with AS/NZS 4200.1 as follows:

Duty	Medium
Vapour Classification	Class 4 Vapour Permeable
Vapour Permeability	1.2647 $\mu\text{gG/N.s}$
Water Control Classification	Barrier Passes 4201
Air Control Classification	Air Barrier
Flamability Index	Low $\leq 5$
Electrically Conductive	Non Conductive

## Emittance

Value	Classification
0.73 (Top Face)	Non Reflective
0.77 (Bottom Face)	Non Reflective

## Scope of Use and Limitations

MAXI PLUS roof underlay may be used with all building classes (1-10) and where the primary structure is timber or steel framing in Class 1 and Class 10 buildings and steel framing only in Class 2, 3, 4, 5, 6, 7, 8, and 9 buildings.

Can be used in conjunction with masonry tile, pressed metal tile or profiled metal roof cladding.

Description	Roll Size	Masons Code
Maxi Plus Roof Underlay (220gsm)	1.46m x 36.1m = 50m <sup>2</sup>	AUROOFMAXI



If designed, installed and maintained in accordance with all Masons requirements, MAXI PLUS roof underlay will comply with or contribute to the NCC compliance as stated in the MAXI PLUS data sheet available on our website: [masonsau.com.au](http://masonsau.com.au)

## Fire Performance - Flammability Index Low ( $\leq 5$ )

Tested in accordance with AS1530.2-1993 – Methods for fire tests on building materials, components, and structures Part 2: Test for flammability of materials.

## Bushfire Attack Levels

Complies with AS3959-2018 Construction of buildings in bushfire-prone areas. Seek independent advice regarding the selection of sarking prior to installation in the BAL design.

For details and information on the design, installation, maintenance and warranty of MAXI PLUS refer to our website: [masonsau.com.au](http://masonsau.com.au)

## Store product in a cool, dry place





# Barricade Weather Defense System

A premium weather-resistive rigid air-barrier system for residential and commercial buildings.

Masons Barricade Weather Defense is a three-part system, comprising Masons' 6mm and 9mm fibre cement panels, Barricade WD self-adhesive weather-resistive barrier wrap, and flashing tapes for openings.

The rigid underlay, covered with our water, air and UV resistant self-adhesive wrap, allows construction work to get started inside the building prior to cladding being installed. Interior and exterior trades can work in parallel to speed up programmes, while protecting the building from weather whilst there is no cladding in place.

Masons Barricade Weather Defense contributes to the building moisture management design. It provides a substantial secondary defense against intrusion of moisture and air for the life of the building.

14

**150  
DAYS**

**UV & WEATHER  
PROTECTION**  
Pre-Cladding



**HIGHLY  
WATER  
RESISTANT**



**STRONG**  
Suitable for all  
Wind Zones



**BREATHABLE**  
Passes Water  
Vapour Out



**ADVANCED  
POLY-ACRYLIC  
ADHESIVE**



**AIR BARRIER**  
To Cold Air  
and Moisture

All the benefits of a modern synthetic wall underlay – highly water, air and UV-resistant – with all the best attributes of rigid wall underlay – wind and earthquake bracing units and 30-minute fire resistance rating for walls within a metre of the boundary, as tested by BRANZ.

## Strength

### Wind and earthquake bracing units

The Barricade Weather Defense system is suitable for most wind zones in Australia\*, depending on wall heights. When nailed according to installation instructions, fibre cement contributes bracing units to the structure and stiffens the framing for reduced strain and damage to plasterboard linings.

\* Check with your structural engineer re SED wind zones

## Robust

Masons Barricade Weather Defense brings the techniques and benefits of commercial construction to residential projects. It gives specifiers and builders a hybrid system – with the benefits of a rigid air barrier for site security and lockup, and a modern synthetic weather-resistive barrier wrap for construction continuity and long-term envelope performance.

## Continuity

Multiple teams can work in parallel. With a UV rating of up to 150 days, the interior teams can start even when there is a delay on cladding. Programme and sequencing flexibility means interior trades can carry on their work inside the weather-protected building before cladding is installed. And the project can be locked up securely every night to help prevent theft and vandalism.

## Cohesive

Barricade Weather Defense is a two-layer system – the 6mm or 9mm fibre cement board is fastened to the building framing, then a heavy, self-adhesive building wrap is applied, providing full coverage of all fixings and panel joints. This forms a weather-

resistive barrier that does not require Z flashings or tape at joints. A single layer of Masons 40 Below Flex flashing tape is used around frame openings. Use Masons Penetration Seals and self-adhesive PVC foam or Butyl sealing tapes for any penetrations to complete the assembly.

## Fibre Cement Sheets

Autoclaved, asbestos free, 6mm or 9mm fibre cement boards. The sheets are installed as a non-combustible rigid wall underlay.

## Barricade WD Self-Adhesive Wrap

A three-layer polypropylene self-adhesive flexible wall underlay. Thermally bonded outer spunbonded layers to an inner layer of microporous poly propylene film. Then coated with pressure sensitive pure poly-acrylic adhesive to give superior adhesion to a variety of typical materials.

## Penetration Seals

Air seal flashings designed for cavity construction where pipes or wires penetrate building cladding.

## 40 Below Flex Flashing Tape

Self-adhesive flashing tape to seal around windows, doors, and other joinery openings.

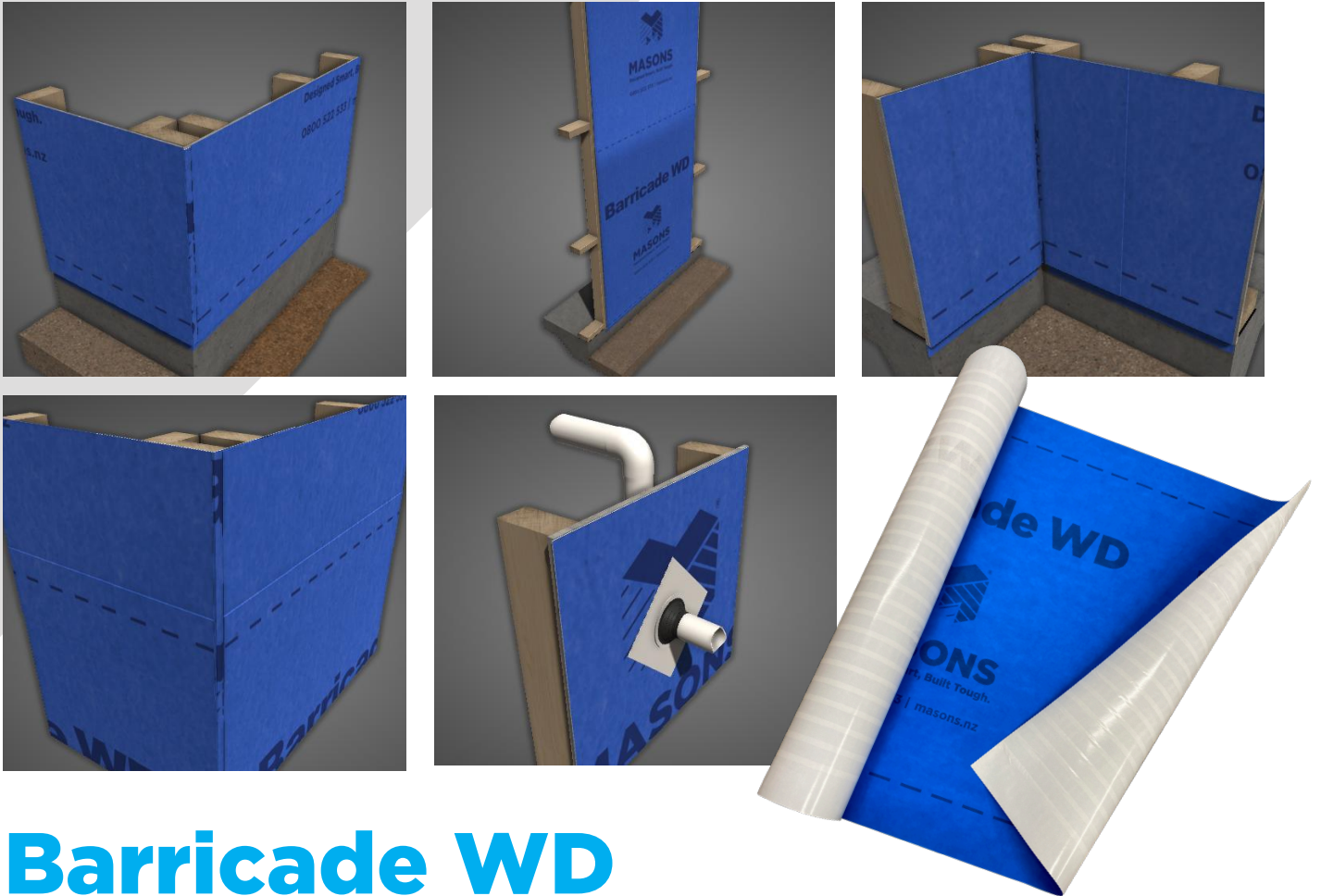
## Additional Resources

- **3D animated drawings**
- **Bracing calculator**

Available on the Barricade Weather Defense System page of our website: [masonsau.com.au](http://masonsau.com.au)

Component	Masons Code
Fibre Cement Sheet 2.4m x 1.2m x 6mm	BWD6MMx2.4x1.2
Fibre Cement Sheet 3m x 1.2m x 6mm	BWD6MMx3.0x1.2
Fibre Cement Sheet 2.4m x 1.2m x 9mm	BWD9MM2.4x1.2
Fibre Cement Sheet 3m x 1.2m x 9mm	BWD9MM3.0x1.2
Barricade WD Self-Adhesive Wrap 1.46m x 34.1m = 50m <sup>2</sup>	BWDSA
40 Below Flex Flashing Tape 75mm, 100mm, 150mm or 230mm x 20Lm	40FLXBELOW75x20/ 100x20 /150x20 /230x20
Stainless Steel Clout 40mm x 2.8 Guage	

Component	Masons Code
Penetration Seals 1-75mm or 80-170mm	PSEAL75 / PSEAL170
PVC foam tape	
Butyl Self-Adhesive tape	
Soudal Firecryl	
Soudal Gorilla MS	
Soudal Gorilla Pro Expanding Foam	
Barricade WD Porous surface primer 1L	
Barricade WD Porous surface primer 5L	



# Barricade WD

## SELF-ADHESIVE WEATHER RESISTIVE BARRIER

May be used over a variety of vertical rigid substrates on both residential and commercial buildings.

Barricade WD is designed to shed water, yet freely pass water vapour. It will block the movement of air and cover all fixings and joints in the underlying substrate.

It is manufactured by thermally bonding outer spunbonded layers to an inner layer of microporous polypropylene film, coated with pressure-sensitive advanced polyacrylic adhesive, offering superior adhesion to a variety of typical building materials.

Barricade WD may be applied over many common construction rigid substrates and there are no height restrictions. Once exterior elements (the roof, soffit

lining and joinery) have been installed, and the rigid underlay has been covered with Barricade WD, then interior works can carry on inside without the cladding being in place for up to 5 months.\* Interior and exterior trades can work in parallel to speed up programmes.

Masons Barricade WD contributes to the building moisture management design. It provides a substantial secondary defense against intrusion of moisture and air for the life of the building.

\* Maximum MC % requirements of the bottom plate must be met.

<p><b>150 DAYS</b></p> <p><b>UV &amp; WEATHER PROTECTION</b></p> <p>Pre-Cladding</p>	 <p><b>HIGHLY WATER RESISTANT</b></p>	 <p><b>STRONG</b></p> <p>Suitable for all Wind Zones</p>	 <p><b>BREATHABLE</b></p> <p>Passes Water Vapour Out</p>	 <p><b>ADVANCED POLY-ACRYLIC ADHESIVE</b></p>	 <p><b>AIR BARRIER</b></p> <p>To Cold Air and Moisture</p>
--	--	---	---	--	---

# WrapStrap

FOR HOUSE WRAP



WrapStrap is a polyethylene embossed strap that is installed around the building wrap to keep the insulation in place and prevent it from bulging into the cavity for buildings with a drained cavity application.

WrapStrap can also be used as a support for non-self supporting roof underlay.

# Insulation Strap



Insulation Strap is a high strength polypropylene woven and coated strap. Used to secure underlay and insulation for roof and wall applications.

Available in easy to handle 250m rolls for fast application.

Description	Masons Code
Blue pp Strap 19mm x 300m	WRAPST19X300
Blue pp Strap 25mm x 250m	WRAPST25X250

Description	Masons Code
Insulation Strap 25mm x 250m	INSULSTRAP250



**MASONS**  
Designed Smart, Built Tough.

# 40 Below™ Flashing Tapes

Sticks in a wide range of weather conditions. No heat gun and no primer spray required.



**LARGE RANGE OF SIZES**



**EXCELLENT ADHESION  
IN A RANGE A CONDITIONS**



**OUTSTANDING PERFORMANCE  
AND VALUE FOR MONEY**



**NO HEAT GUNS, PRE WARMING OR  
PRIMER SPRAY REQUIRED**

# 40 Below Ultra Sticky

## Great Value Everyday Flashing Tape

This classic white facer tape has excellent adhesion in a wide range of conditions. It is great value for money and with a no nonsense performance record, earns the trust of the professionals.

40 Below Ultra Sticky is compatible with most wraps and sealants so eliminates issues on site.

### EXCELLENT ADHESION

### TRUSTED AND COMPATIBLE

With most Wraps and Sealants

### THIN

No Build-Up in Corners



Corner Guard



# 40 Below Platinum

## Premium Flashing Tape

Has advanced adhesive and silver foil water resistant facer to bring you an ultra-thin, pliable flashing tape with excellent adhesion. Ultra thin so no build-up in corners.

### PREMIUM ALUMINIUM FOIL FACER

### ACRYLIC ADHESIVE

Aggressive and Dependable

### ULTRA THIN

No Build-Up in Corners



# 40 Below Flex

## Superior Flashing Tape

Our most advanced, high performance flashing tape with cutting edge adhesive and a superior flexible facer.

Ultra thin and pliable with high water resistance and maximum UV protection. Nail and screw sealable with a single layer.

### SUPER PREMIUM WHITE FACER

### ADVANCED ACRYLIC ADHESIVE

Aggressive and Dependable

### ULTRA THIN AND FLEXIBLE

No Build-Up in Corners



Use scraper for firm adhesion



# Choose the Correct Tape for your Project

	40 Below Ultra Sticky	40 Below Platinum	40 Below Flex
Roll Sizes	75mm x 20m 100mm x 20m 150mm x 20m 230mm x 20m	75mm x 20m 100mm x 20m 150mm x 20m 230mm x 20m	75mm x 20m 100mm x 20m 150mm x 20m 230mm x 20m
Facer Colour	White, woven PP	Aluminium foil	White, compound flexible
Sealant Compatible*	Yes	Yes	Yes
UV Resistance	180 days	180 days	270 days
Temperature Range - Application	-10°C to 40°C +	-10°C to 40°C +	-10°C to 40°C +
Layers on sill for Nail/Screw Sealability**	2	2	1
Rigid Air Barrier****	Yes	Yes	Yes
Use on UNI Plus Seams, Overlaps and Head Flashings	No*****	Yes	Yes
Use on UNI and UNI Plus Openings	No	Yes	Yes
* ** **** *****	All 40 Below flashing tapes are compatible with common construction sealants. Masons recommends a site patch test or reference to the sealant. Tested to AAMA-711.20. Tensile Strength ASTM D1970, Water Penetration around Fasteners AAMA 711, Peel Adhesion to Substrates ASTM D3330, Elevated Temperature ASTM D3330, Thermal Cycling ASTM D3330, Cold Temperature Pliability ASTM C765, Resistance to Peel AAMA 711, Low Temp Adhesion to Substrates ASTM D3330. 40 Below may not be approved for use with some Rigid Air Barrier Systems. Check with the manufacturer. Use 40 Below Platinum or 40 Below Flex.		

## Frame Flashing Installation

Must be installed in accordance with these instructions:

- Ensure the 40 Below tape width is correct to cover the width of the framed joinery opening. 150mm wide tape is used for 90mm wide window or door framing. 230mm wide tape is used for 140mm-150mm wide reveals.
- Building wrap is installed to the exterior face of the framing.

- At window and door openings it is cut on a 45° angle away from each corner, then the flaps are folded into the opening and secured.
- Do not deliberately stretch or over tension tape when applying.
- To ensure maximum adhesion, make sure the substrate surface is clean, dry and free from dust or other contaminants.

**NOTE:** We recommend seams of UNI Plus are sealed with 40 Below Flex or Platinum Flashing Tape.



Description	Masons Code
40 Below flashing tape 75mm x 20m	40BELOW75x20
40 Below flashing tape 100mm x 20m	40BELOW100x20
40 Below flashing tape 150mm x 20m	40BELOW150x20
40 Below flashing tape 230mm x 20m	40BELOW230x20
40 Below Plat flashing tape 75mm x 20m	40FPLBELOW75x20
40 Below Plat flashing tape 100mm x 20m	40FPLBELOW100x20
40 Below Plat flashing tape 155mm x 20m	40FPLBELOW150x20
40 Below Plat flashing tape 230mm x 20m	40FPLBELOW230x20
40 Below Flex flashing tape 75mm x 20m	40FLXBELOW75x20
40 Below Flex flashing tape 100mm x 20m	40FLXBELOW100x20
40 Below Flex flashing tape 150mm x 20m	40FLXBELOW150x20
40 Below Flex flashing tape 230mm x 20m	40FLXBELOW230x20

# Penetration Seals

## AIR SEAL FLASHINGS

Designed for cavity construction where pipes or wires penetrate building cladding and pass through the air seal membrane such as building wrap, or air barriers.

This Penetration Seal maintains the integrity of the air seal in the cladding cavity and assists the external rain screen of a cladding system to maintain weather tightness.

### Applications

Compatible with all vertical, flexible or rigid air barriers and synthetic flexible wall underlays.

### Physical Properties

- The carrier is a thin (1mm or less thick) flexible woven, waterproof, synthetic flashing material coated with pressure sensitive adhesive.
- The flexible EPDM nozzle can be cut to fit a standard range of pipes or wiring.
- Trim to size for penetrations from 1-75mm and 80-170mm.
- Easy installation.
- Affordable – great value for money.



Durability. Provides a service life equal to the façade cladding which is at least 15 years and up to 50 years for a brick veneer cladding.	Pass
Can be exposed to UV for up to 90 days	Pass



### Installation Instructions



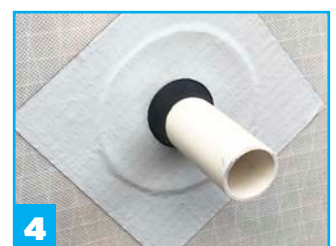
1 Measure the pipe to be flashed and choose the appropriate sized P Seal.



2 Using the markings on the nozzle. Trim slightly smaller than the diameter of the pipe for a snug fit. Ensure surface receiving the P Seal is clean and dry.



3 Slide seal over penetration until adjacent to the surface. Don't force or stress the flashing. Re-trim if too tight. Orient the flashing diamond fashion (45°). Remove the backing paper and press firmly to smooth out any wrinkles. It will stick aggressively and repositioning will not be possible.



4 Always fit the P Seals at 45° to assist moisture run off. For a firm adhesion, ensure wrinkles are smoothed out well with a plastic scraper.

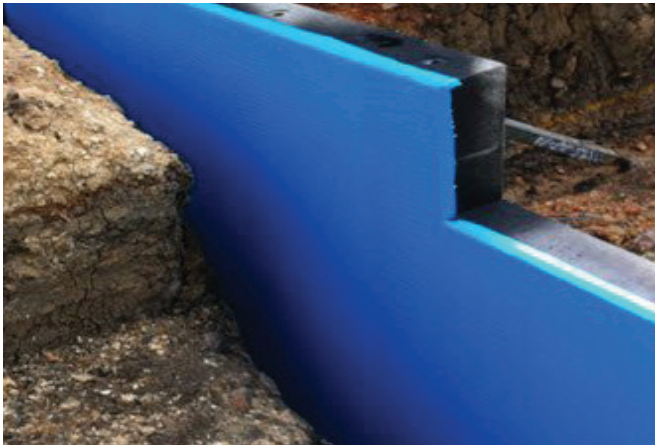
Description	Masons Code
Penetration Seal - 1-75mm Pack of 10	PSEAL75
Penetration Seal - 80-170mm Pack of 10	PSEAL170

\*\* Appraised by Les Boulton and Associates Report 191235: Visit [masonsau.com.au](http://masonsau.com.au) to view the full appraisal.

# Foam Guard

## ADHESIVE MEMBRANE PROTECTION

Foam Guard Adhesive (ADH) is an advanced protection foam with a long-lasting adhesive backing. Foam Guard protects waterproofing and tanking membranes from punctures, UV exposure and damage during construction.



### Installation Guide

Installation procedures to Install Foam Guard self sticks correctly:

- Ensure surface is clean, dust free and dry.
- During application ensure all air is expelled between face of membrane and Foam Guard sheet.
- Allow to overlap Foam Guard sheet by minimum of 50mm on each side.
- Apply adequate pressure to complete surface area of contact to ensure positive adhesion to substrate.
- On vertical applications, should Foam Guard be left exposed for extended periods it is recommended that Masons Seam Tape be applied at top edge of membrane to prevent possible edge peel.

**NOTE:** Application to cementitious or highly textured surfaces in the vertical plane will not bond successfully. It is recommended that a small trial patch be carried out on all surfaces to ensure proper adhesion. Extreme cold conditions may also affect bonding.

### Applications

- Protects numerous types of membrane systems both in the horizontal and vertical plane and above and below ground.
- Fast install over other protection methods
- Performs as a slip sheet under toppings
- Membrane protection for gravel and garden roof tops

### Physical Properties

- Foam Guard is a roll off closed cell - cross linked foam fused to a strong poly fabric face. It is backed with an ultra long lasting adhesive.
- UV stable surface
- Minimal expansion or distortion when exposed to heat or sunlight
- Has high abrasion resistance
- Extreme high decay and rot resistance
- Good impact resistance
- Minimum distortion under traffic use
- Extreme adhesion that withstands severe weather conditions

Description	Roll Size	Masons Code
Foam Guard Adhesive 24m <sup>2</sup>	H 1.2m x L 20m	FLRGRDADHI200

# Roof Boot Flashings

A WEATHER-TIGHT SEAL FOR ROOF PENETRATIONS



When installed the roof boot flashings create a weather-tight seal between the service pipe and the building roof.

Available as either EPDM Rubber or Red Silicon.

**EPDM** withstands temperatures from -50 °C to 115 °C and up to 150 °C intermittently.

**SILICON** withstands temperatures from -60 °C to 200 °C and up to 250 °C intermittently.

## MULTIPLE SIZES IN RANGE

Fits any Pipe Penetration

## EPDM RUBBER AND RED SILICON

Withstands Various Temperatures

## EASY TO INSTALL

Fits Round or Square Fittings

## ULTRA THIN

No Build-Up in Corners

## ALSO FOR FLASHING PIPES ON HORIZONTAL CLADDING

## GUARANTEED FOR UP TO 15 YEARS

These roof boots have been appraised by Les Boulton and Associates, Report 191261. Visit [masonsau.com.au](http://masonsau.com.au) to view the full appraisal.

Description	Pipe Size (mm)	Base Size (mm)	Masons Code
Roof Boot Flshg 0-20mm <b>Blk</b> EPDM	0-20	57x57	RBFBE 0-20MM
Roof Boot Flshg 0-35mm <b>Blk</b> EPDM	0-35	100x100	RBFBE 0-35MM
Roof Boot Flshg 110-170mm <b>Blk</b> EPDM	110-170	283x283	RBFBE 110-170MM
Roof Boot Flshg 130-230mm <b>Blk</b> EPDM	130-230	305x305	RBFBE 130-230mm
Roof Boot Flshg 160-220mm <b>Blk</b> EPDM	160-220	360x360	RBFBE 160-220MM
Roof Boot Flshg 160-300mm <b>Blk</b> EPDM	160-300	445x445	RBFBE 160-300MM
Roof Boot Flshg 5-120mm <b>Blk</b> EPDM	5-120	215x215	RBFBE 5-120MM
Roof Boot Flshg 5-55mm <b>Blk</b> EPDM	5-55	135x135	RBFBE 5-55MM
Roof Boot Flshg 50-70mm <b>Blk</b> EPDM	50-70	175x175	RBFBE 50-70MM
Roof Boot Flshg 0-35mm <b>Blk</b> EPDM Cble Nipples	0-35	92x92	RBFBE CN 0-35MM
Roof Boot Flshg 20-70mm <b>Blk</b> EPDM Retro Fit	20-70	160x160	RBFBERF 20-70MM
Roof Boot Flshg 0-35mm <b>Red</b> Silcn	0-35	100x100	RBFRS 0-35MM
Roof Boot Flshg 110-170mm <b>Red</b> Silcn	110-170	283x283	RBFRS 110-170MM
Roof Boot Flshg 130-230mm <b>Red</b> Silcn	130-230	305x305	RBFRS 130-230MM
Roof Boot Flshg 160-220mm <b>Red</b> Silcn	160-220	360x360	RBFRS 160-220MM
Roof Boot Flshg 160-300mm <b>Red</b> Silcn	160-300	445x445	RBFRS 160-300MM
Roof Boot Flshg 5-120mm <b>Red</b> Silcn	5-120	215x215	RBFRS 5-120MM
Roof Boot Flshg 50-70mm <b>Red</b> Silcn	50-70	175x175	RBFRS 50-70MM
Roof Boot Flshg 0-35mm <b>Red</b> Silcn Cble Nipples	0-35	98x98	RBFRS CN 0-35MM
Roof Boot Flshg 5-55mm <b>Red</b> Silcn Cble Nipples	5-55	137x137	RBFRS CN 5-55MM
Roof Boot Flshg 20-70mm <b>Red</b> Silcn Retro Fit	20-70	153x153	RBFRSRF 20-70MM

# Floor Guard

## TEMPORARY FLOOR PROTECTION

A heavy duty floor protection sheet designed to protect surfaces from moisture, marks and damage.



**SLIP  
RESISTANT**



### Applications

- Natural stone, floor, wall and bench-tops
- Tiled areas, carpet and timber floors
- Can be used indoor and outdoor, plus many other varied applications

### Physical Properties

- 2mm - 2.5mm thick
- Water repellent
- Easy to cut and install
- Reusable
- Good Impact resistance
- Has high abrasion resistance
- Extreme high decay and rot resistance
- Minimum distortion under traffic use
- Excellent chemical resistance

The closed cell foam backing protects the surface from impact and is fused to a strong poly-fabric blue weave that give the product its hard wearing finish.



### Seam Tape

Seam Tape is the ideal tape for sealing the seams of the Floor Guard underlay.

This tape has extreme adhesion qualities therefore we don't recommend using it on finished floor surfaces as the adhesive may leave residue.

Description	Roll Size	Masons Code
Masons Floor Guard	2mm x 1.2m x 20m = 24m <sup>2</sup>	MASFLOOR
Masons Seam Tape	50mm x 30m	FLOORGUARDTPE



# Easy-Form & Sof-Form

## ADHESIVE EXPANSION JOINT FILLERS

Both products are cast-in-situ concrete. They are self-adhesive and have a Zip Top that can be torn off for when a sealant is to be used.

Easy-Foam has a light strip adhesive on the back. Sof-Foam has a stronger adhesive with a yellow peel-away backing strip.

### Applications

- Use anywhere an element needs to be permanently separated or provision made for expansion and contraction in concrete slabs: pavements, driveways, floor slabs etc.
- Where driveways or pavements meet: building claddings, retaining walls, pre-poured columns or plant boxes.
- Between swimming pools and concrete paving.
- Solution to weed control between joints.

**NOTE:** When the application does not require a sealant, Easy-Form should be installed upside down, with the zipped top down to avoid unwanted removal.

### Zip Top

All Easy-Form is zipped approx. 10mm from the edge. The Zip Top provides installation options for when a sealant is to be used. The zipping ensures a clean tear every time.

### Physical Properties

- Easy to use continuous roll. Light, flexible and easily cut on site with a sharp knife.
- Supplied with one-sided acrylic adhesive for faster installation.
- Physically cross-linked, polyolefin foam with an outer skin.
- Superior compression and recovery properties vital to ensure a good joint filler.
- Closed cell, non absorbent, compatible with most commonly used sealants and impervious to most liquids. Free of heavy metals, plasticisers and CFCs.



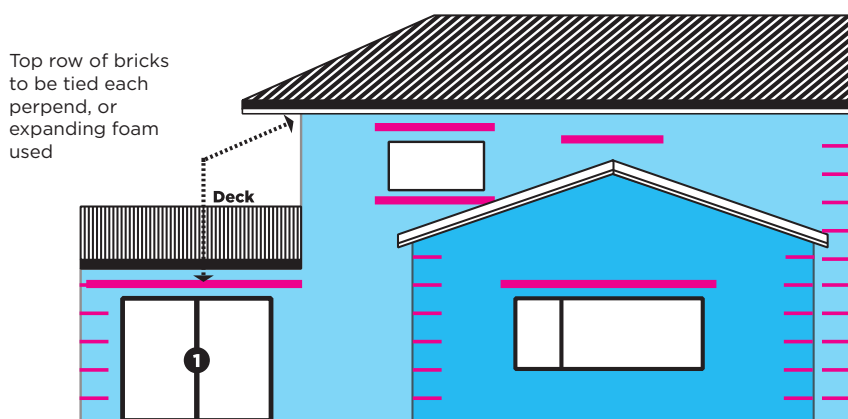
Description	Masons Code
Easy-Form 10mm x 50mm x 25m	FMEF10X50X25
Easy-Form 10mm x 75mm x 25m	FMEF10X75X25
Easy-Form 10mm x 100mm x 25m	FMEF10X100X25
Easy-Form 10mm x 125mm x 25m	FMEF10X125X25
Easy-Form 10mm x 150mm x 25m	FMEF10X150X25
Easy-Form 10mm x 200mm x 25m	FMEF10X200X25
Easy-Form 10mm x 250mm x 25m	FMEF10X250X25
Easy-Form 10mm x 300mm x 25m	FMEF10X300X25
Sof-Form 100mm x 25m	FMADH10x100x25
Sof-Form 125mm x 25m	FMADH10x125x25
Sof-Form 150mm x 25m	FMADH10x150x25
Sof-Form 175mm x 25m	FMADH10x175x25
Sof-Form 200mm x 25m	FMADH10x200x25
Sof-Form 250mm x 25m	FMADH10x250x25
Sof-Form 300mm x 25m	FMADH10x300x25
Sof-Form 50mm x 25m	FMADH10x50x25
Sof-Form 75mm x 25m	FMADH10x75x25

# Brick and Blocklock

## MASONRY REINFORCING

Masons Bricklock and Blocklock products have been developed to strengthen brick and block veneer walls.

An excellent product for areas that are prone to cracking or movement. Made from 4mm thick galvanised or stainless steel rods.



Bricklock Corners every 6th course alternate opposing corners



### BRICK AND BLOCKLOCK

Straight Assists in crack prevention on bricks of blocks that are laid in stacked bond. Or when there is only a small row of bricks less than 800mm.

Masons recommended to install Bricklock every 6th course.

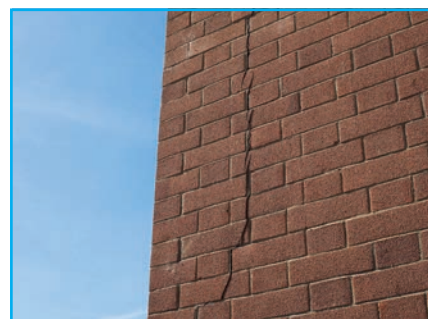
## Applications

When specifying or installing Bricklock, a common sense approach to where the product is installed must be used. Typically every 6th course.

**Most common areas to use the reinforcing are:** above all windows and to all external corners.

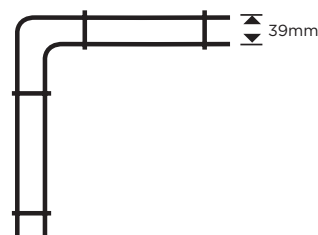
**Other vulnerable areas are:** where there is a gap smaller than 800mm, for example, a window near a deck, where a window meets a roof top or roof top gable meets a soffit. Close up Bricklock spacing to every 6th course in these areas.

Disclaimer - 'Bricklock' is designed to add strength to the brick veneer and is over and above normal Building Code for brick veneer construction. At no stage do Masons guarantee that it will completely stop any possible cracking in the veneer.



### BRICKLOCK

Corner Assists in crack prevention on external corners. Masons recommended to install a Bricklock corner every **6th** course.



Description	Qty	Masons Code
Bricklock 4.0mm <b>Corner</b> 25cm - Stainless Steel	10	BRICKLOCK CNR SS
Bricklock 4.0mm <b>Corner</b> 26.5cm - Galvanised	10	BRICKLOCK CNRGAL
Bricklock <b>Straight</b> 4.0mm 2m - Stainless Steel	10	BRICKLOCK STR SS
Bricklock <b>Straight</b> 4.0mm 2m - Galvanised	10	BRICKLOCK STRGAL
Bricklock <b>Drop</b> 4.0mm 70cm - Galvanised	10	BRICKLOCK DRPGAL
<b>Block</b> lock Straight 4.0mm 140mm x 2m - SS	10	BLOCKKOKSSSTR2M
<b>Block</b> lock Straight 4.0mm 140mm x 2m - Galv	10	BLOCKKOKGALSTR2M

# Letterbox Inserts

## EXTENDABLE

Extends from 23cm and up to 50cm

### SIZE

300mm x 300mm x 230mm

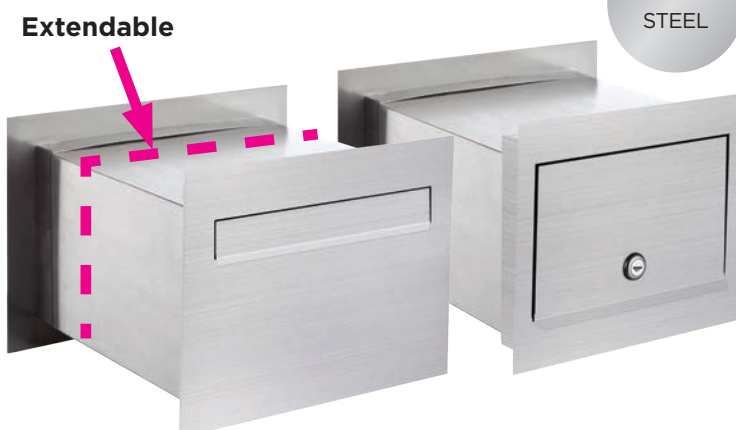
### STAINLESS STEEL

### EXTENDABLE SLEEVE

To fit brick or block letterboxes 230mm

### LOCKABLE

Front and back plates with key lock



Front view

Rear view

Description	Size	Masons Code
Brick Letterbox Liner SS	30 x 30 x 23cm	LBRICKLNRSS

# Vents



## KLA Weephole Vent

A plastic vent designed for use in masonry veneer construction, to provide a standard 10mm gap between masonry and a clear air passage for removal of moisture, and circulation of air to vent the cavity.

Designed to vermin-proof the weep hole and restrict driving rain and is available in grey and cream to match most mortar colours.

Description	Size	Masons Code
KLA Stone Coloured Vent	10 x 80mm	KLA STONE
KLA Gray Coloured Cavity Vent	10 x 80mm	KLA GREY

## Aluminium Weephole Vent

This Aluminium vent is used for covering weepholes on plaster clad buildings.

It is installed over the buildings weep holes to prevent vermin entering the cavity and to give the plaster exterior a tidy finish. The vent can be painted to blend in with the exterior.

Description	Qty	Masons Code
Vent 100 x 50mm (metal louvre)	25	VENT

# Vents and Diffusers



## Dome Cowl

### QUALITY DESIGN FINISH

304 Stainless Steel

### EXTRA WEATHER PROTECTION

Due to Rounded Hood Design

### EASY INSTALLATION

Mounts Directly to Ductwork

### WITH INSECT MESH SCREEN

Made from Durable Stainless Steel



## Air Diffuser Valve

### QUALITY 304 STAINLESS STEEL

With Rubber Seal

### ADJUSTABLE AIRFLOW

By Turning the Cone Centre

### EASY INSTALLATION

Via Clip System



## Louvre Grille Round

### QUALITY DESIGN FINISH

304 Stainless Steel

### EASY INSTALLATION

Mounts Directly to Ductwork

### WITH INSECT MESH SCREEN

Made from Durable Stainless Steel



## Air Diffuser Valve

### 360 DEGREE AIR DELIVERY

For All Temperatures

### ADJUSTABLE AIRFLOW

By Turning the Cone Centre

### EASY INSTALLATION

Removing and Maintaining

### SCRATCH RESISTANT SURFACE

Made from ABS Plastic

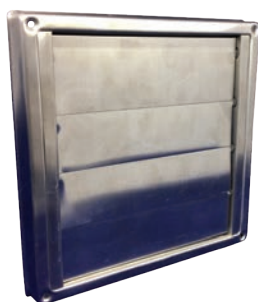
Description	Neck mm	Face mm	Masons Code
Dome Cowl Stainless	100	R 150	VENTDMSS100MM
Dome Cowl Stainless	125	R 187	VENTDMSS125MM
Dome Cowl Vent Stainless	150	R 208	VENTDMSS150MM

Louvre Grille Round Stainless	100	R 143	VENTEXSS100MM
Louvre Grille Round Stainless	125	R 177	VENTEXSS125MM
Louvre Grille Round Stainless	150	R 208	VENTEXSS150MM

Description	Neck mm	Face mm	Masons Code
Air Diffuser Valve Stainless	100	R 140	VENTDMSS100MM
Air Diffuser Valve Stainless	125	R 175	VENTDMSS125MM
Air Diffuser Valve Stainless	150	R 220	VENTDMSS150MM
Air Diffuser Valve Stainless	200	R 295	VENTDMSS200MM

Air Diffuser Valve Wht Plastic	100	R 175	VENTEXSS100MM
Air Diffuser Valve Wht Plastic	150	R 260	VENTEXSS150MM
Air Diffuser Valve Wht Plastic	200	R 320	VENTEXSS200MM
Air Diffuser Valve Wht Plastic	250	R 395	VENTEXSS250MM

# Gravity and Fixed Grilles



## Gravity Grille

### QUALITY 304 STAINLESS STEEL

With Rubber Seal

### EXTRA WEATHER PROTECTION

Due to Back Draught Louvres

### EASY INSTALLATION

Mounts Directly to Ductwork



## Eggcrate Grille

### MOUNTS DIRECTLY TO DUCTWORK

Because of the Tapered Neck

### SCRATCH RESISTANT SURFACE

Made from ABS Plastic

### EASY INSTALLATION WITH 4 SCREWS

### WITH INSECT MESH SCREEN

Made from Durable Stainless Steel



## Gravity Grille

### EXTRA WEATHER PROTECTION

Due to Back Draught Shutter

### SCRATCH RESISTANT SURFACE

Made from ABS Plastic

### EASY INSTALLATION

Mounts Directly to Ductwork

### WITH INSECT MESH SCREEN

Made from Durable Stainless Steel



## Fixed Louvre Grille

### MOUNTS DIRECTLY TO DUCTWORK

Because of the Tapered Neck

### SCRATCH RESISTANT SURFACE

Made from ABS Plastic

### EASY INSTALLATION

Supplied with 4 Screws

### WITH INSECT MESH SCREEN

Made from Durable Stainless Steel

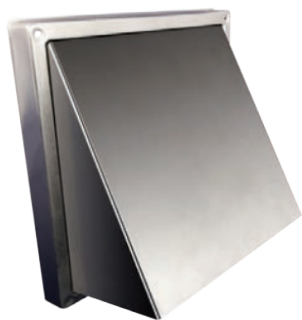
Description	Neck mm	Face mm	Masons Code
Gravity Grille 100mm Stainless	100	160	VENTGLSS100MM
Gravity Grille 125mm Stainless	125	185	VENTGLSS125MM
Gravity Grille 150mm Stainless	150	185	VENTGLSS150MM

Gravity Grille Wht Plastic	100	125	VENTGRAVG100
Gravity Grille Wht Plastic	125	150	VENTGRAVG125
Gravity Grille Wht Plastic	150	175	VENTGRAVG150
Gravity Grille Wht Plastic	200	225	VENTGRAVG200

Description	Neck mm	Face mm	Masons Code
Eggcrate Grille 100mm W/Plst	100	125	VENTEGG100
Eggcrate Grille 125mm W/Plst	125	150	VENTEGG125
Eggcrate Grille 150mm W/Plst	150	175	VENTEGG150
Eggcrate Grille 200mm W/Plst	200	230	VENTEGG200

Fixed Louvre Grille W/Plst	100	125	VENTFIXLG100
Fixed Louvre Grille W/Plst	125	150	VENTFIXLG125
Fixed Louvre Grille W/Plst	150	175	VENTFIXLG150
Fixed Louvre Grille W/Plst	200	225	VENTFIXLG200

# Vents and Ducting



## Cowl Wall Vent - Stainless

### QUALITY DESIGN FINISH

304 Stainless Steel with Rubber Seal

### EXTRA WEATHER PROTECTION

Due to Back Draught Shutter

### EASY INSTALLATION

Mounts Directly to Ductwork

### WITH MESH SCREEN

Made from Durable Stainless Steel



## Cowl Wall Vent - Plastic

### EXTRA WEATHER PROTECTION

Due to Back Draught Shutter

### SCRATCH RESISTANT SURFACE

Made from ABS Plastic

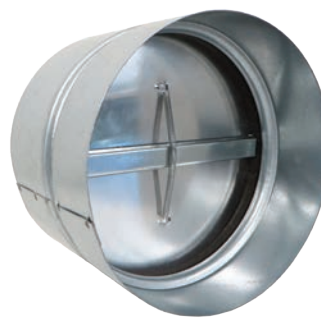
### EASY INSTALLATION

Mounts Directly to Ductwork

### WITH BIRD BARS

Description	Neck mm	Face mm	Masons Code
Cowl Wall Vent Stainless	100	160	VENTCWLSS100MM
Cowl Wall Vent Stainless	125	185	VENTCWLSS125MM
Cowl Wall Vent Stainless	150	185	VENTCWLSS150MM

Cowl Wall Vent White Plst	100	190	VENTCOWL100
Cowl Wall Vent White Plst	125	185	VENTCOWL125
Cowl Wall Vent White Plst	150	185	VENTCOWL150



## Back Draft Shutter

### REGULATES AIR FLOW

In Air Ducts

### SPRING-LOADED

For Positive Closure

### DIRECTIONAL AIR FLOW

One-Way Design

## Flexible Aluminium Duct

### BENDY AND SELF SUPPORTING

Directs Airflow Easily

### CONSTITUTION

2x Aluminium Layers

### TEMPERATURE RANGE

-30°C to 150°C

### OPERATION PRESSURE

3000 Pa



Description	Vent mm	Masons Code
Back Draft Shutter/Damper 100	100	VENTBDD100
Back Draft Shutter/Damper 125	125	VENTBDD125
Back Draft Shutter/Damper 150	150	VENTBDD150

Flexible Duct 100mm 1m boxed	100	VENTIFXAL100MMX1M
Flexible Duct 100mm 3m boxed	100	VENTIFXAL100MMX3M
Flexible Duct 100mm 6m boxed	100	VENTIFXAL100MMX6M
Flexible Duct 125mm 1m boxed	125	VENTIFXAL125MMX1M
Flexible Duct 125mm 3m boxed	125	VENTIFXAL125MMX3M
Flexible Duct 125mm 6m boxed	125	VENTIFXAL125MMX6M
Flexible Duct 150mm 1m boxed	150	VENTIFXAL150MMX1M
Flexible Duct 150mm 3m boxed	150	VENTIFXAL150MMX3M
Flexible Duct 150mm 6m boxed	150	VENTIFXAL150MMX6M
Flexible Duct 200mm 3m boxed	200	VENTIFXAL200MMX3M

# Access Panels

Provide easy access through non-fire rated dry lined walls and ceilings to conceal plumbing and electrical. For residential and commercial buildings.



## MDF Coated Steel

### MDF COATED STEEL

#### PRE PRIMED AND PAINT READY

With noise reducing liner

#### BEADED FRAME

Plaster-ready trim

#### HANDLE-LESS

Push-catch closing system



## White Powder Coated Steel

### QUALITY FINISH

White Powder Coated Steel

#### HANDLE-LESS

Push catch closing system

#### EASY INSTALLATION

Screws provided

Description	Size mm	Masons Code
Matt MDF Cated Steel, Paintable	600	VENTMCOVERMATT
Panel White Powder Coated Steel	200	VENTMCOVER200
Panel White Powder Coated Steel	400	VENTMCOVER400
Panel White Powder Coated Steel	600	VENTMCOVER600



## White Steel - Lockable Stainless Steel - Lockable

### LOCKABLE

With two keys

#### EASY INSTALLATION

Fixed with adhesive or screws



## White Plastic

### LIGHTLY TEXTURED MATT PLASTIC

Easy to clean and will not discolour

#### REMOVABLE DOOR

Snap closed and hinged

#### SUPER EASY INSTALLATION

Fixed with adhesive or screws

Description	Size mm	Masons Code
White Powder Coat Steel, Lockable	600	VENTMCOVER600LOCK
Brushed Stainless Steel, Lockable	200	VENTSSCOVER200
Brushed Stainless Steel, Lockable	400	VENTSSCOVER400
Brushed Stainless Steel, Lockable	600	VENTSSCOVER600
White, Plastic, Access Panel	200	VENTMCOVERPL200



**masonsau.com.au**

Your 24/7 resource for:

- Installation Guides
- Specification Documentation
- Compliance Documentation
- Data Sheets
- Brochures
- CAD Drawings



**MASONS**  
Designed Smart. Built Tough.

Product service is at the heart of what we do.

Since being established in 1999, Masons have a long and proud history of 'knuckling down and getting stuff done'. Masons Aust (NZ) Ltd is a company founded on that very approach to raising the quality of building products through innovation and clever thinking.



**OVER 20 YEARS IN THE INDUSTRY**

We understand the Building Sector



**WE BACK OUR PRODUCTS**

Support is only a phonecall away



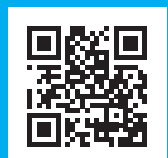
**COMPLIANCE**

Testing Literature Reviewed by Professionals

**M**

**MASONS REPS**

Experts on all our Products

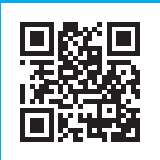


Visit: **masonsau.com.au** or phone: **0406 760 816**



# MASONS

Designed Smart, Built Tough.



Visit: [masonsau.com.au](https://masonsau.com.au)

Phone: **0406 767 816**